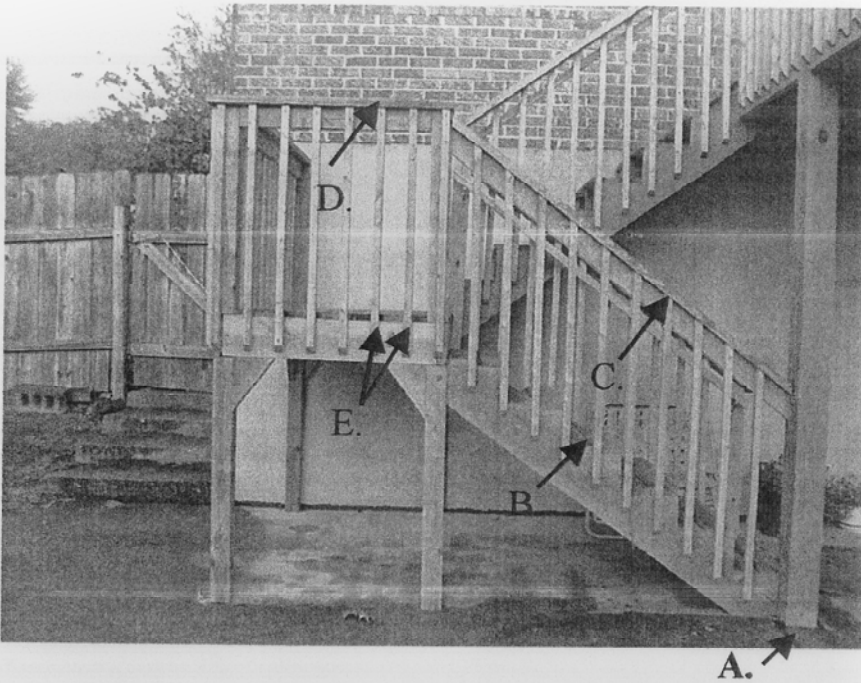
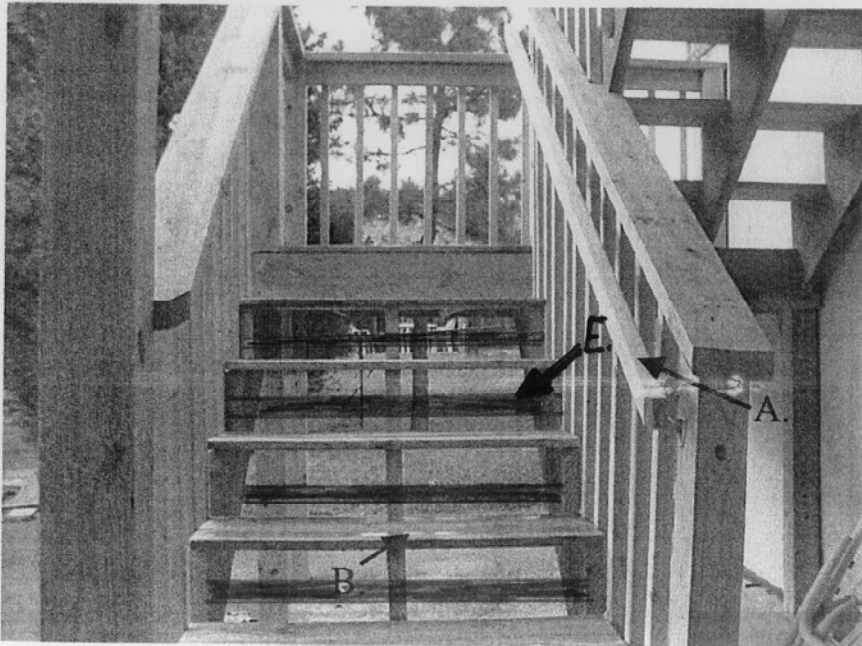


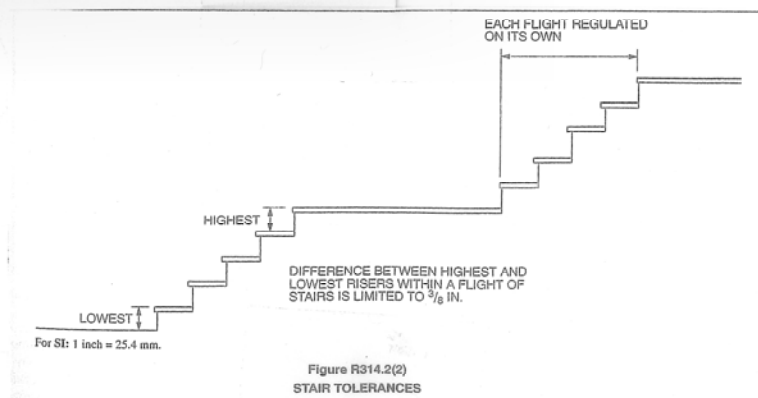
DECK, 2000 IRC



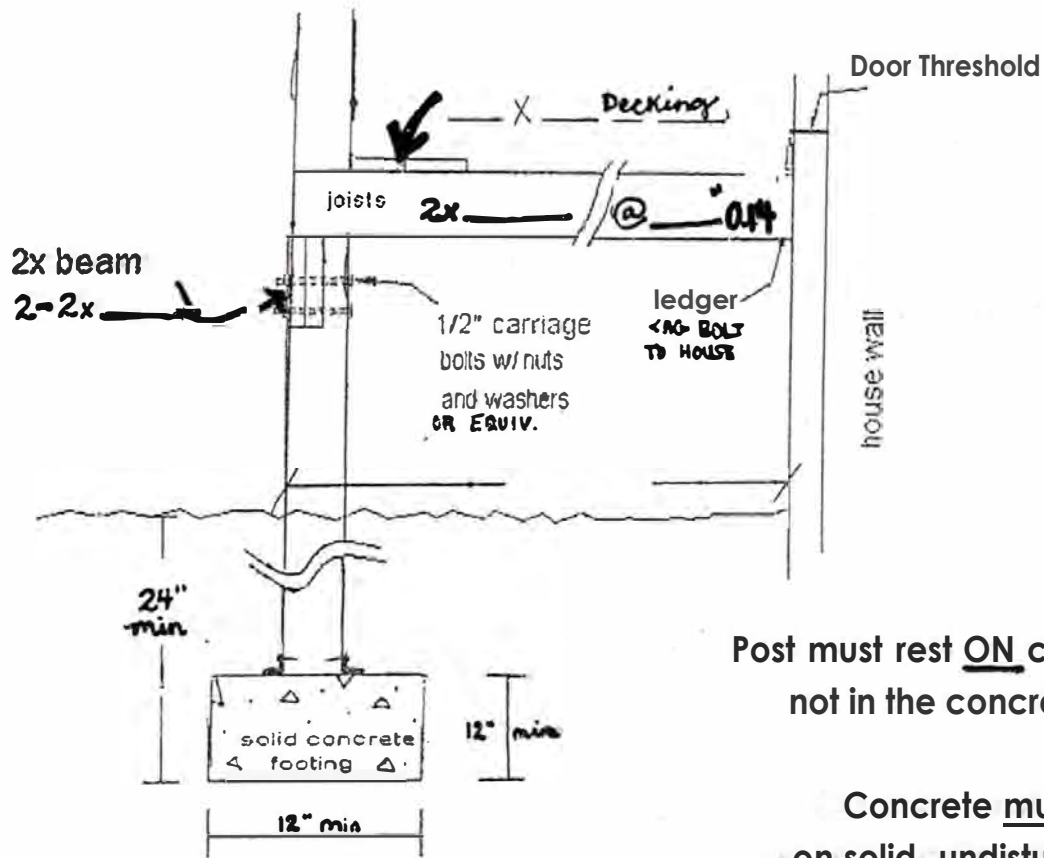
- A Post footing depth: 24" minimum
- B Steps:
Riser Maximum: 7 - $\frac{3}{4}$ "
Tread Minimum: 10"
- C Stair guardrail height: 34" minimum,
measured from tread toe when total stair
rise exceeds 30" above grade
- D Porch, balcony or raised floor guardrail height:
36" minimum when walking surface exceeds 30"
- E Guardrail intermediate openings: 4" maximum



- A Handrail:
Height: 38" maximum
34" minimum
- Grip size:
Diameter: 1 - $\frac{1}{4}$ " to 2 - $\frac{5}{8}$ "
Circumference: 4" to 6 - $\frac{1}{4}$ "
- with the largest cross-section
dimension not exceeding 2 - $\frac{1}{4}$ "
- Stand-off: Not less than 1 - $\frac{1}{2}$ "
- B Stairway width:
Above handrail: 36" wide minimum
Below handrail: 31 - $\frac{1}{2}$ " wide minimum



DECK FRAMING PLAN

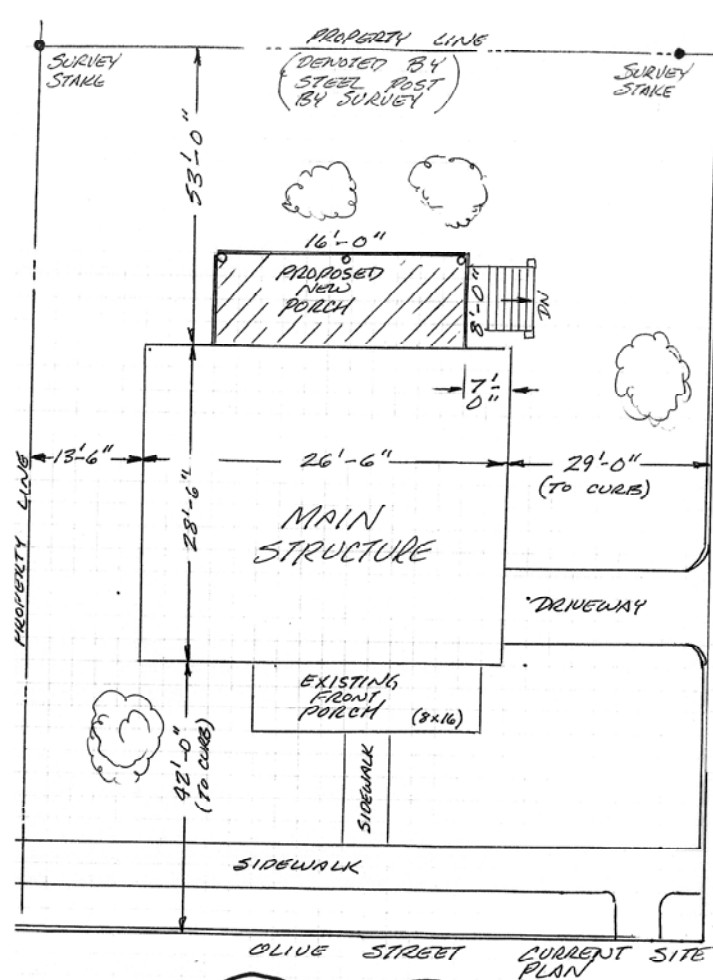


Post must rest ON concrete, not in the concrete.

Concrete must rest on solid, undisturbed soil.

Width of footing is determined by loading formula.



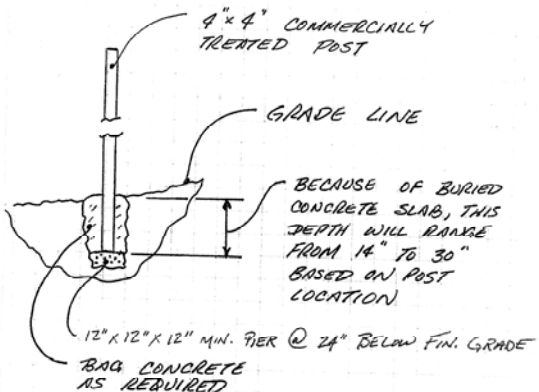


TOP SURFACE OF GUARD RAIL TO BE APPROX 38"-42" ABOVE TREAD SURFACE (34" MIN)

CONCRETE STEP PAD (4" THK)

2"x12" CARRIAGE
COMMERCIALY TREATED
TREAD= 10" WIDE
RISER = 7 5/16" HIGH
FINISH TREAD= 2"x10"
x 36"-46"

MAIN DECK UNDER STRUCTURE TO BE 2"x10" (MIN) COMMERCIALY TREATED WITH JOISTS ON 16" CENTER
*TYPING TO BE 54"x6" STANDARD COMMERCIAL TREAD
EAST ELEVATION



TYPICAL POST INSTALLATION

- GENERAL NOTES:
1. ALL WOOD TO BE COMMERCIALY TREATED EXTERIOR GRADE.
 2. ALL FASTENERS TO BE RATED FOR EXTERIOR USE.
 3. CONCRETE REQUIRED TO BE COMMERCIALY PREPARED, BAGGED, MATERIAL.

